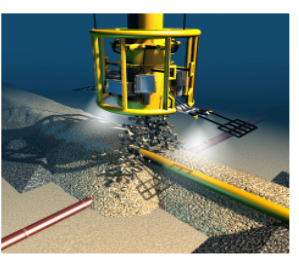




# Tideway

Offshore Contractors

## D.P. FALL PIPE VESSEL 'ROLLINGSTONE'



# Main data

Length overall 139.00 m.  
 Breadth 32.00 m.  
 Draught loaded 6.60 m.  
 Loading capacity 11,500 tons  
 Main propellers 2 x 3,125 kW  
 Azimuth thruster (retractable) 2 x 1,100 kW  
 Bow thruster (tunnel) 2 x 750 Kw  
 Cruising speed 12 kts

Dynamic Positioning Simrad Albatross, ADP 702 Dynamic Positioning System with Auto Track, Auto Heading and Follow ROV mode

ERN **95.91.65**

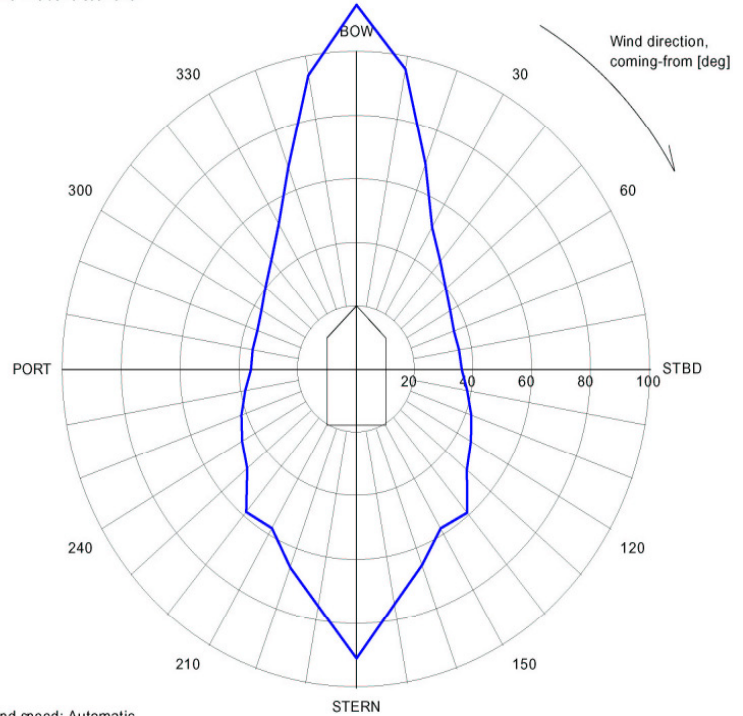
Fall Pipe Steel pipe sections (8 m.) with internal rubber lining deployed through moonpool  
 Diameter 1,000 / 500 mm.  
 depth up to 1,000 m.

ROV Active heave compensated on wires, controlling lower Fall Pipe end. Equipped with cameras, pro-filers, pipe tracker and other sensors as required.  
 power 300 kW

Classification ABS \* A1E \* AMS \* A.C.C.U. \* DPS-2 (Class II) Special Service Stone Dumping Vessel IMO / ISM - Code

# D.P. FALL PIPE VESSEL 'ROLLINGSTONE'

Limiting 1 minute mean wind speed in knots at 10 m above sea level



Wind speed: Automatic  
 Significant wave height: DNV (ERN)  
 Mean zero up-crossing period: DNV (ERN)

Rotating tidal current: 1.5 knots  
 Rotating wind induced current:  $0.000 \cdot U_{wi}$  knots

